

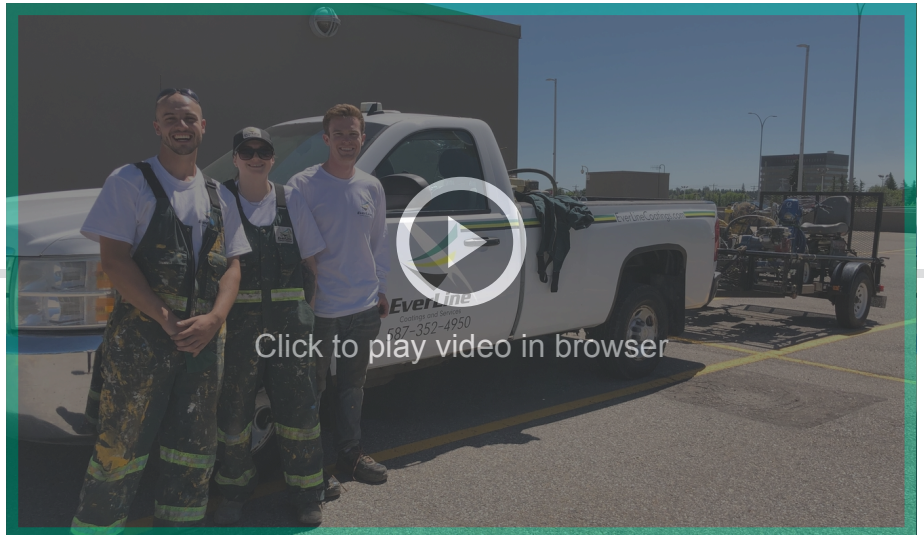
EverLine

Coatings and Services

RETHINK PAVEMENT MAINTENANCE

JUPITER LAKES VILLAS CRACKFILL AND SEALCOAT

OUR TEAM



BILLY PEMBROKE **OPERATIONS MANAGER**

Billy is a lifelong resident of the Treasure Coast. With a business degree from the University of North Florida, Billy has been working locally since graduation. With a background in Aviation, Marine and Automotive services, Billy has a well-earned reputation for delivering projects on-time, on-budget, and with high levels of customer satisfaction.



MIKE TIERNEY **OWNER**

Mike is a 25 year resident of the Treasure Coast. Mike has worked in the Technology field for 20+ years, with a focus on building and operating systems designed to produce great results and happy customers, efficiently. Having held COO, President, and CEO titles, Mike was incredibly impressed with Everline and left at the opportunity to become an Owner. He and his family attend Christ Fellowship Port St. Lucie.





OUR STORY

It started in 2012 with one machine and the determination to disrupt an industry. Since then, EverLine has grown each and every year.

Line striping began as—and still is—our core business; But in our journey to become a one-stop shop for all of our customers, we have expanded our offerings to include a breadth of pavement maintenance services.

As an award-winning business with locations across the country (and now with two appearances on CBC's Dragon's Den) we are uniquely poised to offer our great customer service, value and quality to each and every parking lot in America.

ACCREDITATION

- Fully Certified Safety Program (COR)
- \$2,000,000 Commercial General Liability Insurance
- Incorporated in Florida, and locally owned and operated

OUR PURPOSE

For Our Clients

EverLine contributes to society by providing cutting-edge solutions with a focus on safety objectives, value and aesthetic excellence for our clients and their patrons.

For Our People

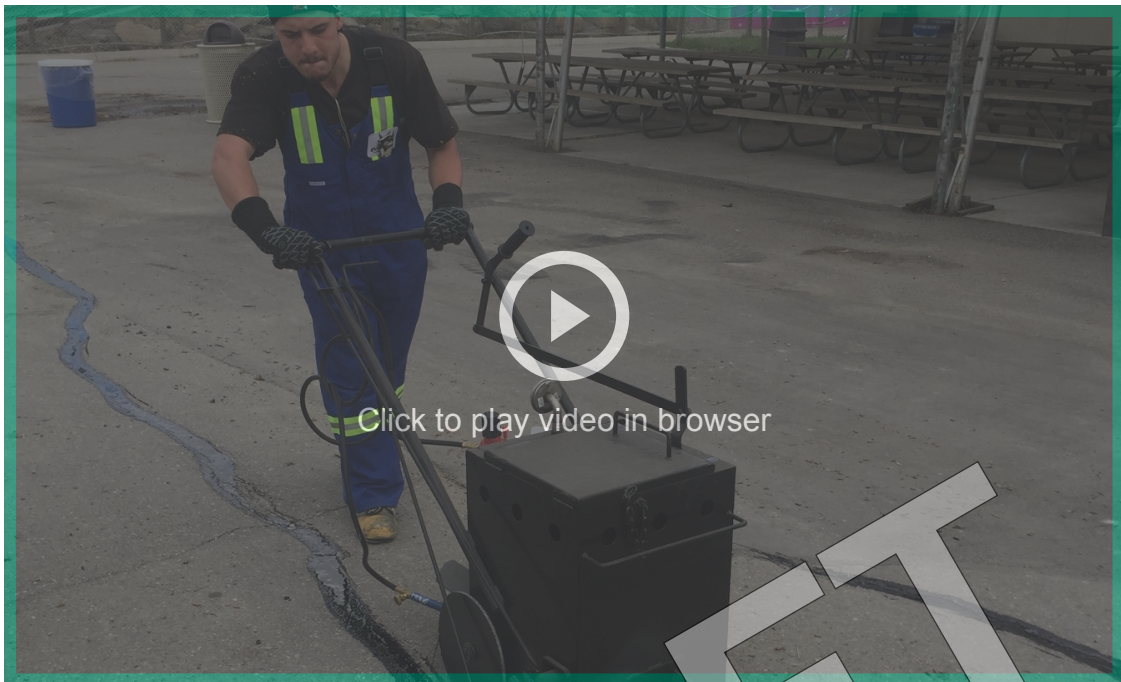
Our purpose is to provide our employees with a workplace that is considered a vehicle for personal and professional growth.

OUR KEYS TO SUCCESS

- 01 Our high quality is systemized.
- 02 We constantly innovate.
- 03 We answer the call.



OUR EXPERTISE



WATCH US IN ACTION IN THIS 3-MIN VIDEO!

Line Striping

- Parking Lots
- Custom Stenciling
- Durable Traffic Markings
- Interior Safety Lines

Asphalt Maintenance & Repairs

- Crack Filling
- Sealcoating
- Pothole Repair & More

Parking Lot Services

- Power Washing
- Sign/Wheel Stop/Bollard Installation

Epoxy & Specialty Flooring

- Slip-resistant Solutions
- Durable Flooring
- Aesthetic Improvement

Parking Garage Maintenance

- Membrane Repair & Installation
- Sweep & Scrub
- Wall & Ceiling Painting



WHY WORK WITH EVERLINE?

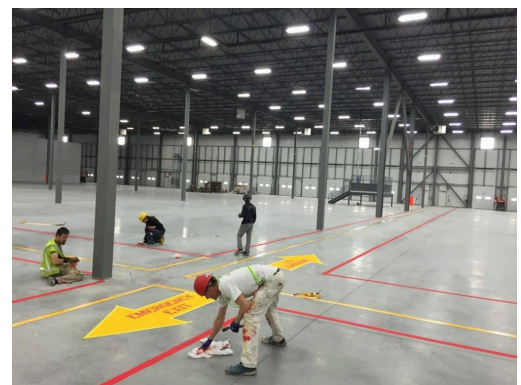
Our mission is to be known as the company that changed everything in our industry and you'll see how we are doing it.

- We are here to make an impact. We hold ourselves to an extremely high standard and are breaking new ground. We are excited about every single project that we are a part of - it's an opportunity to prove ourselves.

We strive to be the leaders in our field when it comes to communication, credibility, professionalism and quality.

We are cutting edge - and you'll get much better service because of it. We bring:

- State-of-the-Art Technology for great project management
- Top quality products and modern equipment to ensure that you are getting the best options and value available for your project's needs
- Innovative solutions that will maximize value on every project that we work on



EverLine
Coatings and Services

Rethink Pavement Maintenance

EverLineCoatings.com

| 4

WE PROVIDE GREAT QUALITY & EXPERIENCE BY FOLLOWING OUR C.O.R.E. QUALITY SYSTEM!

Clear scope: We ensure that there is a clear scope of work generated from our clients for our crews. This guarantees the finished project matches your vision.

Operations report: Utilizing cloud-based technology provides you with up-to-date and immediate progress reports in real time. You will always be in-the-know.

Reach out: We contact you when our crews mark the report as complete. This provides you a final update on the project - Ready for your review.

Evaluate: We ask for your feedback and then analyze the project and experience you had with us. This allows us to become better service providers and offer better pricing.

WE ARE DRIVEN

Dedicated to giving all of our effort, respect, expertise and attention to our clients, our stakeholders and each other every day.

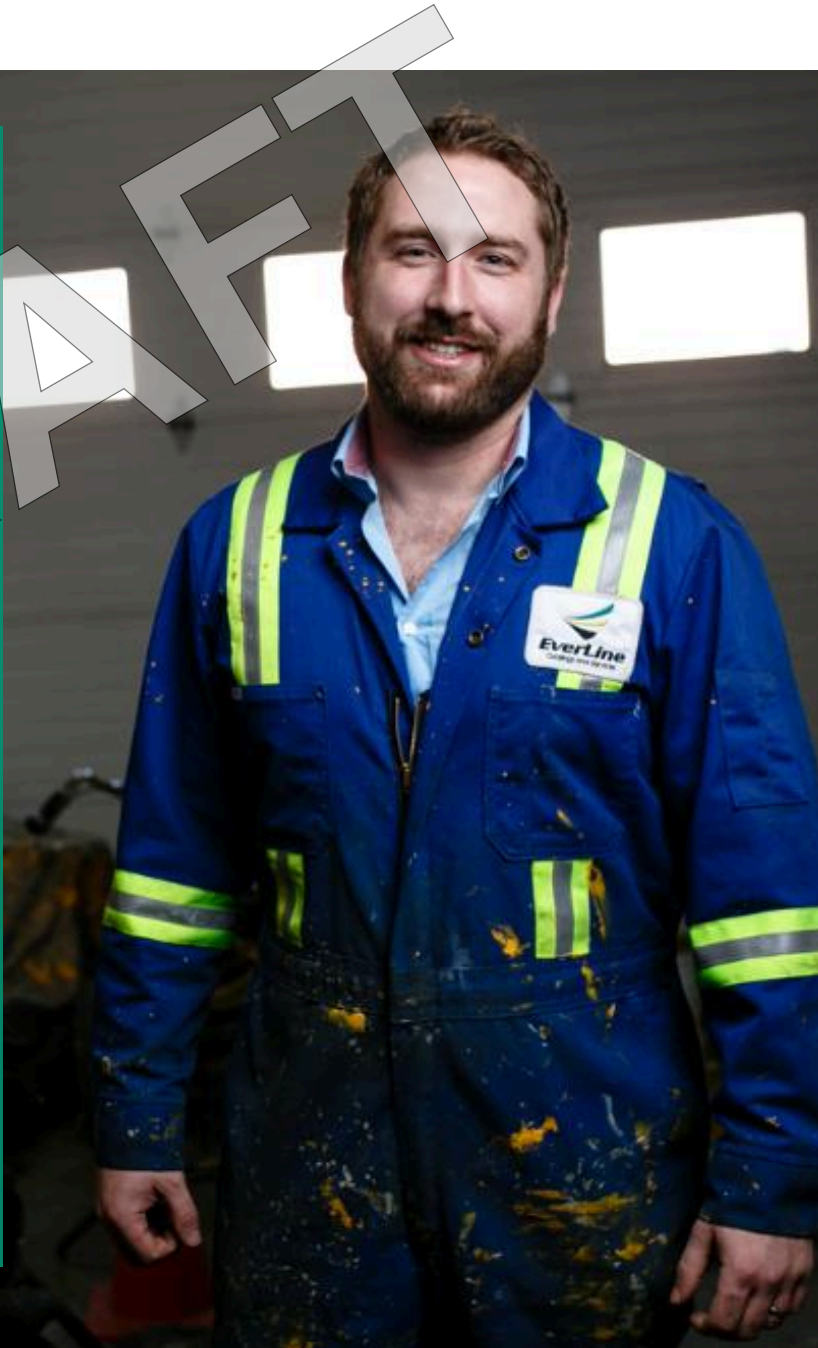
Resourceful by constantly innovating to provide better solutions.

Integrity-Focused through working with honesty, purpose, and delivering on our promises.

Value Based by operating at all times according to our values of respect, sustainability, mutual support and community enhancement.

Excelling the set standards of communication, credibility, professionalism and quality for our industry and will continue to lead in all ways possible.

Nourishing our employees by providing an environment that is fun, friendly and encourages the achievement of their full potential.

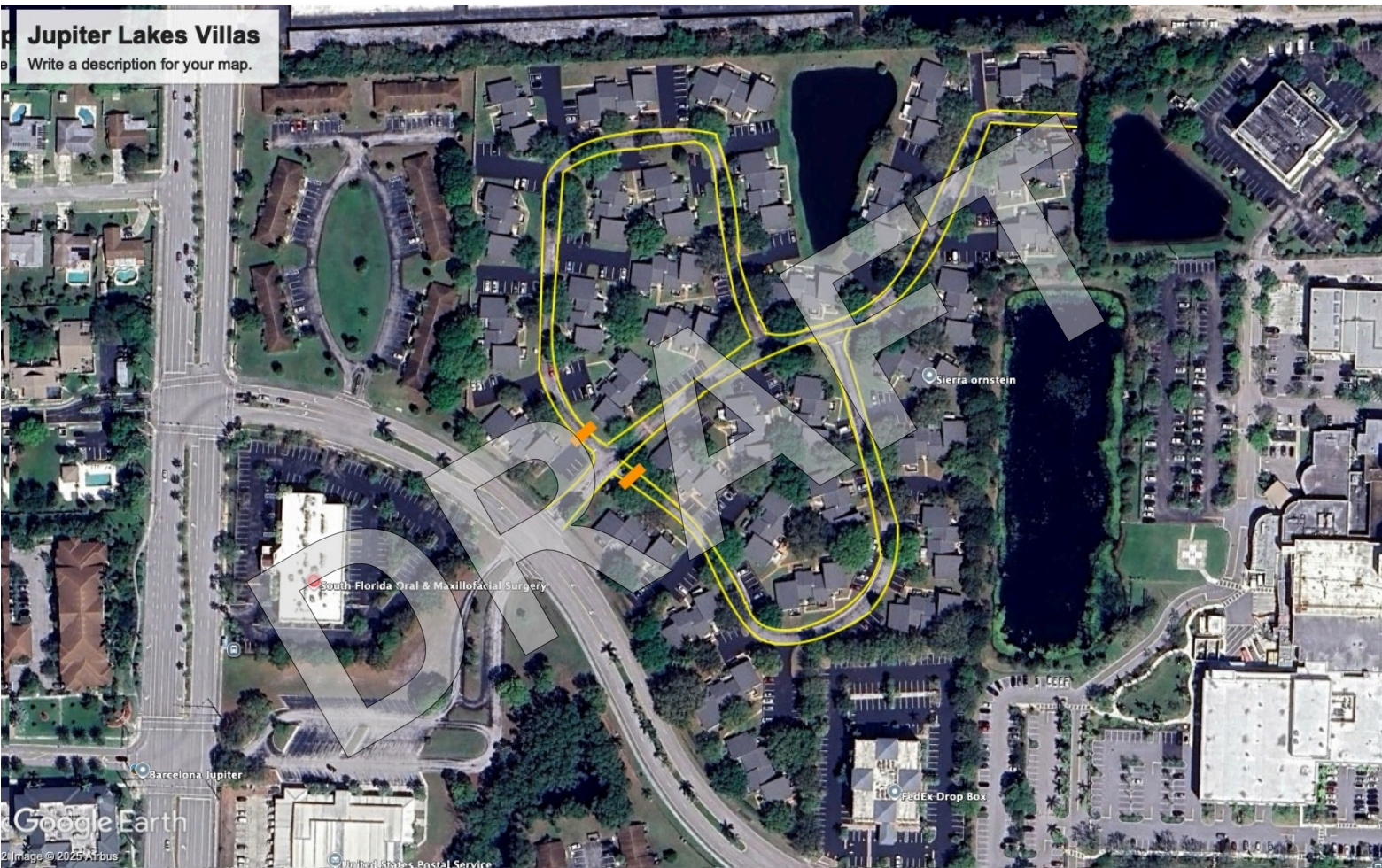




EverLine

Coatings and Services

SCOPE OF WORK



All proposed services to be delivered within yellow outlined areas. Orange rectangles indicate potential placement for new speed tables; this is not contemplated in this proposal but included for reference.





ASPHALT CRACK-FILLING SERVICES

Project Location: Jupiter Lakes Villas

DESCRIPTION	SUBTOTAL
<div><input checked="" type="checkbox"/> Crack-Filling: Includes the preparation and filling of asphalt cracks using Direct Fire (DF) Crack Sealant.</div>	\$4,736
Scope of Work: <ul style="list-style-type: none">- 3,000 linear feet of cracks to be filled throughout development-	
Service Notes: <ul style="list-style-type: none">- Existing cracks to be cleaned out, prepared, and filled using our Direct Fire Crack Sealant.- Preparation includes the use of a high pressure heat-lance to blow out any rocks or debris, burn away any vegetation, and bring the asphalt up to temperature in order to prepare it to receive the new crack filling compound.- Includes the filling of: Existing cracks within noted scope that meet a minimum measurement of 1/8" in width, and 1/8" in depth.- Excludes any cracks larger than 3" in width or depth as cracking this severe requires more than general maintenance (Crack-Filling) can provide. Also excludes filling of cracks within 1 foot of an unrepaired pothole.- Highly experienced and enthusiastic staff on site at all times. Clean-up done daily and in full upon completion.	
TOTAL	\$4,736





ASPHALT SEALCOATING SERVICES

Project Location: Jupiter Lakes Villas

DESCRIPTION	SUBTOTAL
<div><input checked="" type="checkbox"/> Sealcoating: Includes the application of commercial grade coal tar based Asphalt Sealant.</div>	\$15,062
Scope of Work: - 56,100 square feet of asphalt roadways to be sealcoated in 3 phases	
Service Notes: <ul style="list-style-type: none">- Preparation includes the blowing, sweeping, and oil spot priming of the application surface.- Price includes two (2) full coats as recommended by the sealant manufacturer.- Price includes water based latex additive that speeds time-to-dry and toughens surface against tire and power steering marks- We recommend all foot and vehicular traffic remain off of the surface for a minimum of 24 hours- Highly experienced and enthusiastic staff onsite at all times. Clean-up done daily and in full upon completion.	
TOTAL	\$15,062





PROFESSIONAL LINE STRIPING SERVICES

Project Location: Jupiter Lakes Villas

DESCRIPTION	SUBTOTAL
<div><input checked="" type="checkbox"/> Line Striping - Repaint: Includes the repainting of existing markings.</div>	\$750
Scope of Work: <ul style="list-style-type: none">- All stop bars and hatching to be repainted.- Does not include the painting of parking blocks or curbs unless specifically noted.	
Service Notes: <ul style="list-style-type: none">- Traffic markings to be painted using high quality Municipal-Grade traffic paint.- All high traffic areas will receive 2 coats of paint (Crosswalks, speed bumps, stop bars etc).- Highly experienced and enthusiastic staff on site at all times.- Clean-up done daily and in full upon completion.	
TOTAL	\$750



AGREEMENT

In order for us to provide the best service at the best possible price, we request our clients assistance in...

- Having work areas clean and free of debris, tools or obstacles before our arrival - This ensures efficient production of our crews.
- Irrigation or sprinkler systems turned off before and during our scheduled visit.
- Adequate lighting turned on for the entirety of our scheduled visit.
- Ensuring the site is a safe working environment (according to OH&S standards) for our team members.
- Customer is responsible for any required permits.

All work will be completed as per the Scope of Work provided by EverLine Coatings.

We are here to work with you! If you are unable to accommodate the above requirements, please let us know 48 hours before our scheduled visit so we can make necessary adjustments.

If our crews arrive on site and any of the above requirements are not met there may be additional administrative fees charged above the quoted amount.

A 20% deposit is required prior to the first scheduled visit. This proposal is valid for 90 days, after which pricing may change.

We look forward to working with you!

EverLine Coatings

 **SIGNATURE**
Mike Tierney

Mike Tierney |

Jupiter Lakes Villas Condominium Association

 **SIGNATURE**
James Squires

James Squires | *President*

For payment we accept checks, electronic checks or ACH. Payment terms are Net 15. Interest at 2.00% per month (24.00% per annum) will be charged on accounts over 30 Days.



EverLine
Coatings and Services

Rethink Pavement Maintenance

EverLineCoatings.com

| 10